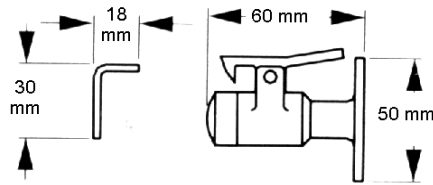


IZERWAREN
Order
numbers

HOOK TYPE DOOR HOLDERS WITH POSITIVE LATCHING

31.710 Hook model door holder

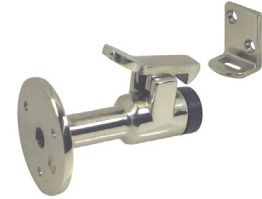
For medium to heavy doors;
316 stainless steel
Distance 60 mm / 2 3/8".
With spring loaded catch



#31.710: Hook door holder spring loaded; Distance 60 mm or 2 3/8" STAINLESS STEEL

31.712 Hook model door holder

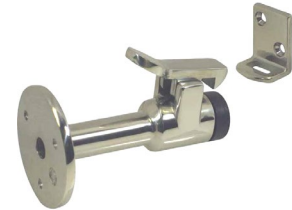
For medium to heavy doors;
316 stainless steel
Distance 86 mm / 3 3/8".
With spring loaded catch



#31.712: Hook door holder spring loaded; Distance 86 mm or 3 3/8" STAINLESS STEEL

31.713 Hook model door holder

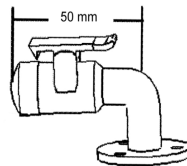
For medium to heavy doors;
316 stainless steel
Distance 102 mm / 4 inch.
With spring loaded catch



#31.713: Hook door holder spring loaded; Distance 102 mm or 4" STAINLESS STEEL

31.714 Hook model door holder

For medium to heavy doors;
316 stainless steel
90 degree Angle distance 50 mm / 2".
With spring loaded catch



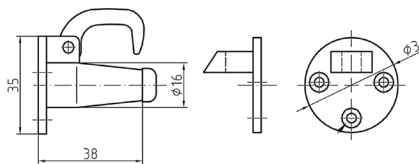
#31.714: As above; 90 degree angle; distance 50 mm C to C or 2" STAINLESS STEEL
Spring loaded

31.513 Hook model door holder

Light Duty
Distance 42 mm ~ 1 5/8"
Chrome Plated Brass

31.236 Hook model door holder (236)

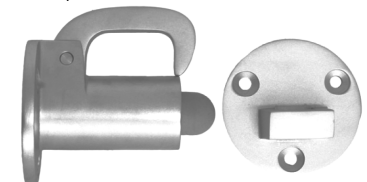
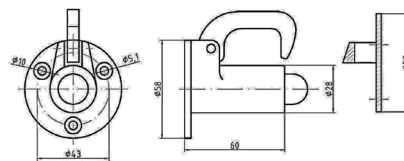
For medium to heavy doors;
Distance 65 mm ~ 2 1/2"
Chrome Plated Brass



#31.513 Hook model door holder Distance 42 mm ~ 1 5/8" Chrome Plated Brass



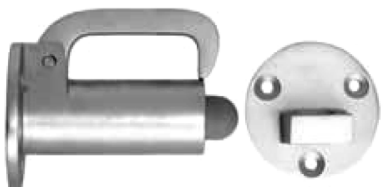
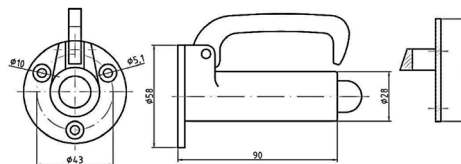
#31.236 Door holder with hook



#31.236: Hook Door holder, Back to back side plates: Distance 65mm or 2 1/2"

31.36A Hook model door holder (236A)

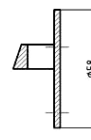
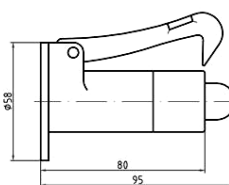
For medium to heavy doors;
Stainless steel
Distance 100 mm ~ 4"
Chrome Plated Brass



#31.36A: Hook Door holder; Back to back side plates: Distance 100 mm 4";

31.406 Hook model door holder

With lip for easy lifting
Distance 100 mm ~ 4"
Chrome Plated Brass



#31.406 Hook Door holder; heavy duty, with lip for easy lifting.
80 mm ~ 3 1/8"; Overall: 100 mm ~ 4" Chrome plated brass