



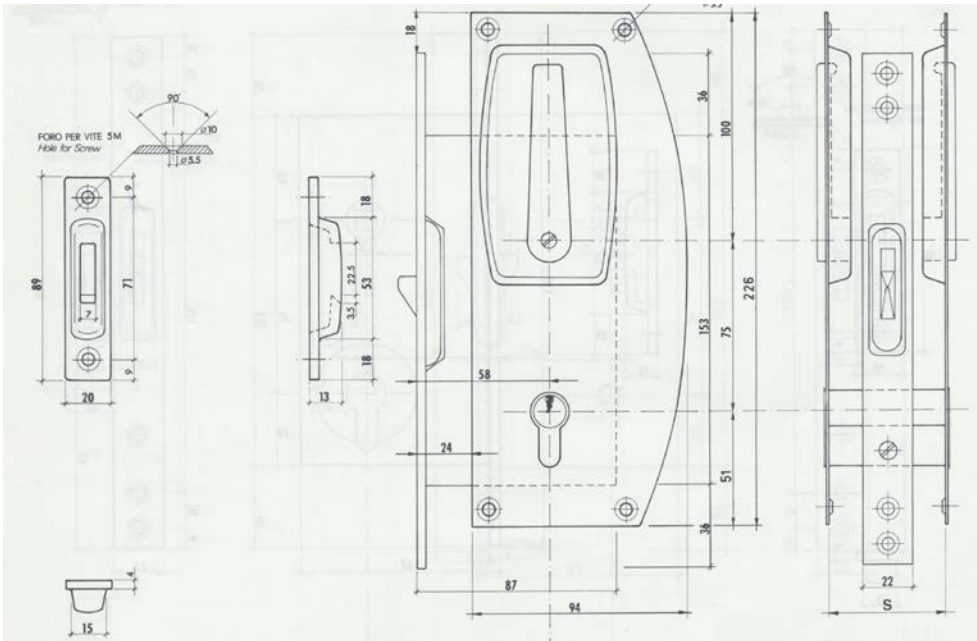
#18.3786 SET Entry Sliding door lock with Profile cylinder and strike box
 Min. door thickness: 38 mm or 1 1/2 inch



#18.3838 Privacy Sliding Door lock with strike plate
 min. door thickness: 25 mm



#18.3796 Passage Sliding door lock with strike plate
 min. door thickness: 25 mm



#18.3786 Entry Lock set with Profile Cylinder keyway. 60 mm backset
 S = Minimum door thickness is 32 mm or 1 1/2 inch.
 S2 = Maximum door thickness for the standard keyway: 1 3/4 inch
 For thicker doors please specify door thickness.
 Stainless steel plates with brass parts.
 Strike box brass chrome plated



Entry set #18.3448
 With skeleton keys (2X)
 Minimum Door thickness
 25 mm or 1 inch

**R & C SWINGING DOOR LOCKS
 SEE PAGE I-13-C-B:**



#18.3372 strike box for entry lock only



#18.3447 Strike plate for privacy lock #18.3838 and passage lock #18.3796