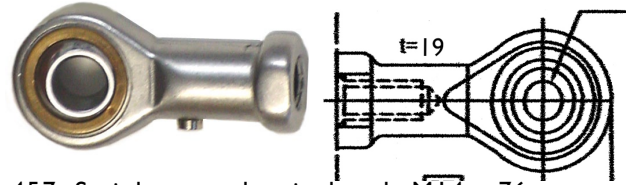
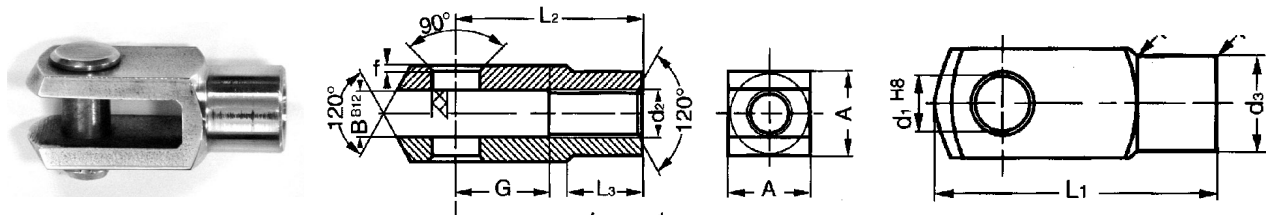


#62.442 Stainless steel eye M14 x 42 mm



#62.457 Stainless steel swivel ends M14 x 76 mm



#62.456 Stainless Steel Fork with Pin. Pin can be removed from fork after removing circlip



Application: Two 22-38-400 gas springs, 2342 Newton force each with custom made brackets.

Series 22-38	22-38 Stainless steel gas spring with valve	'A' Stroke	'B' Total length without attachments; 2 x the stroke + 70 mm	#62.422 With Eyes, add 2 x 42 mm	#62.456 With Forks, add 2 x 56 mm	Thread size Maximum Newton Force*
22-38-200	Extended	200mm	470 mm	554 mm	582 mm	M14 x 1.5 – 5000N
	Compressed		270 mm	354 mm	382 mm	M14 x 1.5 – 5000N
22-38-400	Extended	400mm	870 mm	954 mm	982 mm	M14 x 1.5 – 4000N
(4000N MAX)	Compressed		470 mm	554 mm	582 mm	M14 x 1.5 – 4000N
22-38-500	Extended	500 mm	1070 mm	1154 mm	1382 mm	M14 x 1.5 – 3500N
(3500N MAX)	Compressed		570 mm	754 mm	782mm	M14 x 1.5 – 3500N
22-38-600	Extended	600 mm	1270 mm	1154 mm	1382 mm	M14 x 1.5 – 3500N
(3500N MAX)	Compressed		670 mm	754 mm	782mm	M14 x 1.5 – 3500N
22-38-800	Extended	800 mm	1670 mm	1754 mm	1782 mm	M14 x 1.5 – 3000N
(3000N MAX)	Compressed		870 mm	954 mm	982 mm	M14 x 1.5 – 3000N
22-38-1000	Extended	1000 mm	2070 mm	2154 mm	2182 mm	M14 x 1.5 – 2500N
(2500N MAX)	Compressed		1070 mm	1154 mm	1182 mm	M14 x 1.5 – 2500N
Maximum charge in Newton force			5000N (1100lb.)*	*Maximum Newton force rating depends on application and rod length		
Minimum Charge in Newton force			500N (110 lb.)	<i>22-38 Series Gas Springs are special order only; lead-times apply.</i>		