

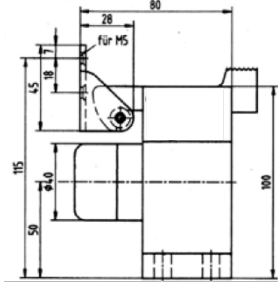
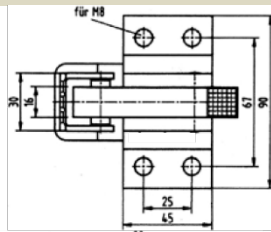
- Special Door Holders
- Rattle free and sea-water resistant

Door holder with hook #32.010

For heavy doors: 220 lbs
Center buffer distance floor: 50 mm / 2"
4 1/2" high x 3 1/8" long x 3 1/2" wide
Available in anodized aluminum and **STAINLESS STEEL**

Bracket, piston and spring stainless steel

- floor mounted
- spring loaded
- with toggle for locking / non locking



#32.010.003 Spring loaded hook type door holder.

**FINISH:
ALUMINUM OR STAINLESS STEEL
SEAWATER RESISTANT.**

32.1610 bottom raising plate 20 mm
Finish: Aluminum / black only.



32.010N



32.010K

#32.010N Cam without lock in open position

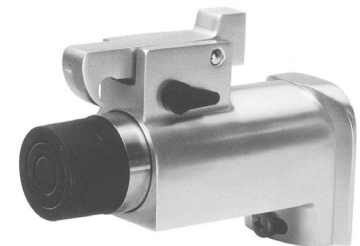
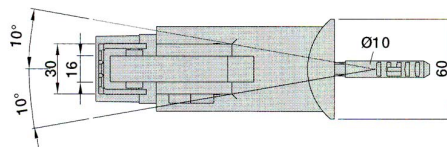
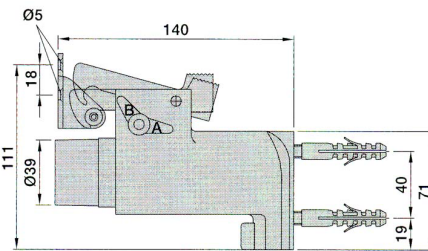
#32.010K Cam with Key Lock allowing for
dead locking in open and in closed position

#32.1610 bottom raising plate 20 mm

Door holder with hook #32.096

For heavy doors: 220 lbs
Distance from wall: 140 mm / 5 1/2"
3 3/4" high x 5 1/2" long x 2 3/8" wide
Heavy anodized aluminum; bracket, piston and
spring: stainless steel

- wall mounted
- spring loaded
- with toggle for locking / non locking
- swivels 10 degrees to either side



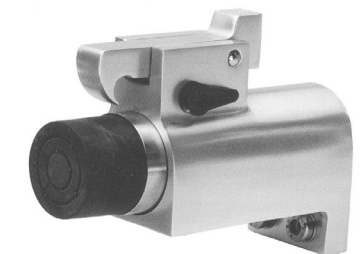
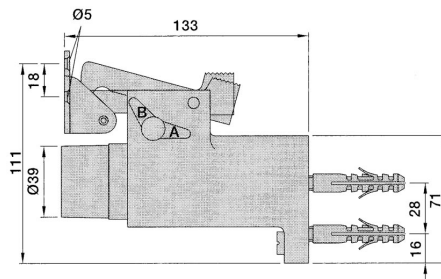
#32.096 Spring loaded hook type door holder
with 10 degree swivel.
Lock in open position.

**FINISH:
ALUMINUM - SEAWATER RESISTANT**

Door holder with hook #32.1012

For heavy doors: 220 lbs
Distance from wall: 140 mm / 5 1/2"
3 3/4" high x 5 1/2" long x 2 3/8" wide
Heavy anodized aluminum; bracket, piston and
spring: stainless steel

- wall mounted
- spring loaded
- with toggle for locking / non locking
- rigid wall mounted



#32.1012 Spring loaded hook type door holder.
Rigid wall mounted.
Cam lock in open position.

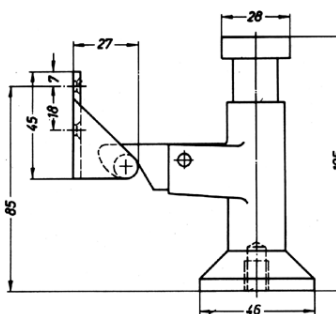
FINISH: ALUMINUM SILVER

Push Model Door holder #32.047

Medium duty, for doors up to 50 kg.
Floor mounted.

4 1/8" High x 2 3/4" Wide

Available in aluminum
Foot operated; Can be used exterior.
Seawater resistant.



#32.047 Push Type Door holder
Floor mounted distance floor to hook:
FINISH: ALUMINUM SILVER

