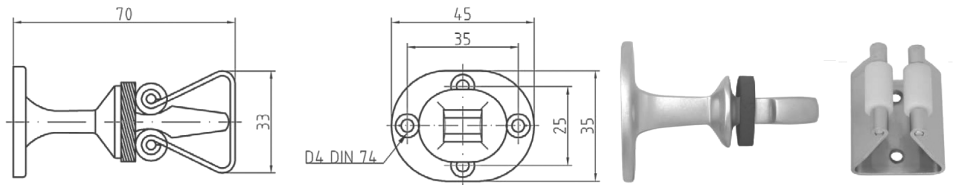


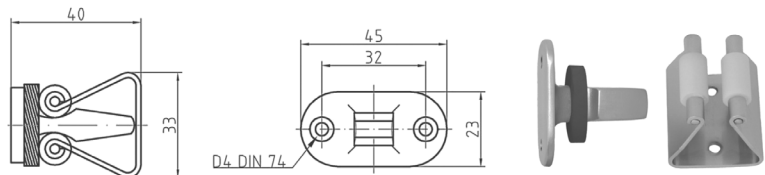
**CLAMPING TYPE DOOR HOLDERS: "HANDS-FREE" OPERATION**Izerwaren
Order
numbers

- 31.78A Clamping model door holder**
For medium heavy doors; brass
and STAINLESS STEEL
Distance 70 mm / 2 ¾"



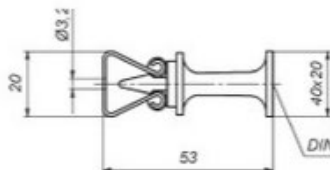
#31.78A.566 Satin Chrome Plated Brass Distance 70 mm / 2 ¾"
#31.78A.266 Polished Chrome Plated Brass Distance 70 mm / 2 ¾"
#31.78A.106 Polished Lacquered Brass Distance 70 mm / 2 ¾"

- 31.078 Clamping model door holder**
For medium heavy doors; brass
Distance 40 mm / 1 ½"



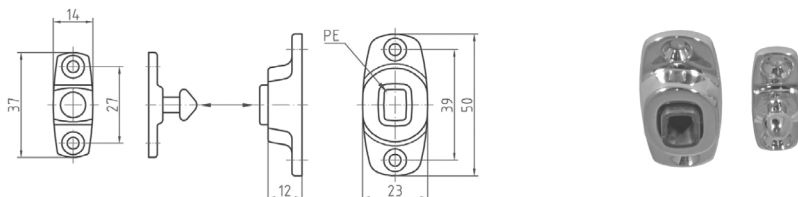
#31.078.566 satin chrome. Distance 40 mm ~ 1 ½" Chrome plated Brass
#31.078.266 polished chrome. Distance 40 mm ~ 1 ½" Chrome plated Brass
#31.078.106 polished lacquered brass. Distance 40 mm ~ 1 ½" Chrome plated Brass

- 31.432 Clamping model door holder**
For light doors, brass
Distance 55 mm / 2 3/16"



#31.432.566 Satin Chrome. Distance 55 mm ~ 2 3/16", Brass for small cabinet doors
#31.432.266 Polished Chrome. Distance 55 mm ~ 2 3/16", for small cabinet doors
#31.432.106 Polished Lacquered Brass. Distance 55 mm ~ 2 3/16", for small cabinet doors

- 31.118 Clamping model door holder**
For light doors 316 stainless
steel
Distance 15 mm / 5/8"
Clamps through rubber socket



#31.118.508: in SATIN **STAINLESS STEEL**; Distance 15 mm ~ 5/8"
#31.118.308: in POLISHED **STAINLESS STEEL**; Distance 15 mm ~ 5/8"

FOR CUSTOM FINISH ORDERS PLEASE CALL OFFICE