



Izerwaren
Order #

316 Stainless steel heavy duty track for sliding doors.

**Maximum door weight system #5:
33 lbs. using 2 carts;** carts placed at 36 inches
distance.
For heavier doors: see page 5-4-1 and 5-4-2,
Finish: rolled 316 stainless steel

**Overhead Sliding Door Track
distance between overhead and
door bracket: 1 1/2" or 38 mm**

54.211 **Rails #5,** 21 x 21 x 1 mm
316 stainless steel
specify length, increments of one meter

54.251 **Rollers #5(carts)**
4 nylon wheels on stainless steel bearings with
M 8 bolt 316 stainless steel
maximum weight per cart: 16.5 lbs

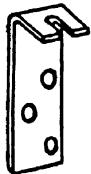
54.259 **End stop #5** with rubber buffer
316 stainless steel



54.256 **Bracket top mounted #5**
100 x 20 x 2 mm
316 stainless steel

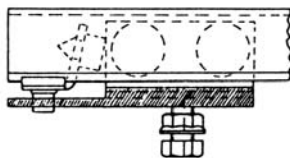


54.258 **Bracket side mounted #5**
82 x 40 x 22 x 3 mm
316 stainless steel

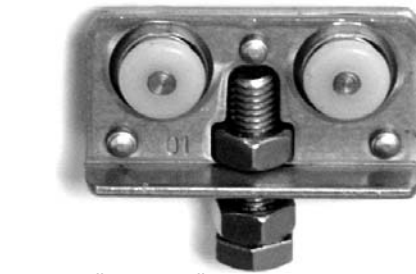
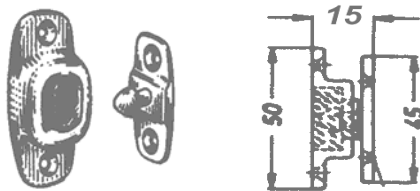


54.221 **Rail bracket, 90 degree, #5**
for mounting rail against side wall
304 stainless steel

54.260 **Doorholder, plastic #5**
To keep door inside pocket, works with
Endstop # 54.259 only



31.118 **Doorholder, 316 stainless steel #31.118**
Distance 15 mm / 5/8
Mounts against the back edge of door to hold door in
pocket



System #5 roller #54.251; nylon wheels,
stainless steel bearings



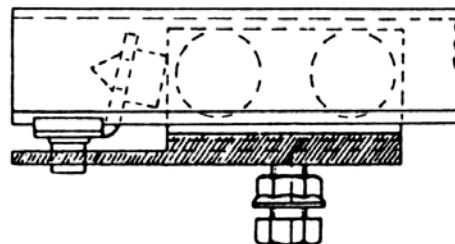
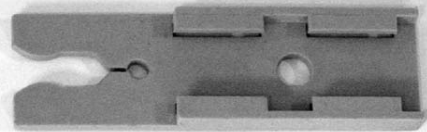
endstop #54.259,



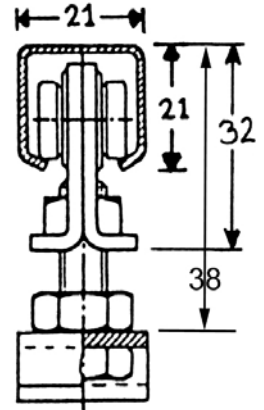
Top mounted door bracket #54.256;



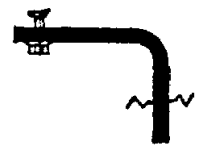
Side mounted door bracket #54.258



Keeper, plastic #54.260
To keep door inside pocket, works with endstop
#54.259 only



rail system #5



wallbracket #5
#54.221



#54.281 bottom guide wheel
for sliding door. Plate
stainless steel 23 x 100 mm;
4 mm thick.
Diameter nylon wheel:
19 mm or 3/4 inch.



Depicted with aluminum U
shaped profile 1 x 1 inch.
Wall thickness: 1/8 inch