

IZERWAREN DOORCLOSER PROGRAM



#35.2390 Hydraulic door closer for medium size doors; - Force 2-6
Finish: Satin Stainless Steel or Polished Stainless Steel



#35.083H Hydraulic door closer for fire rated full size doors; - Force 7
Finish: Satin Stainless Steel or Polished Stainless Steel cover with STEEL arm and bracket



#35.2854 Hydraulic door closer with sliding arm - Force 2-4
Finish: Satin Stainless Steel or Polished Stainless Steel Interior Grade, steel parts.



#35.2390 Door closer set; with adjustable arm, standard and parallel bracket



#35.2390 Door closer set; with adjustable arm, bracket and parallel bracket



#35.2390B Door closer body force 2-6



#35.283A Door closer cover



#35.283C Door closer arm; 2 pieces.



#35.273 Parallel Bracket



#35.271 Bracket

- For medium duty applications.
- with hold open feature; position adjustable
- 316 Stainless steel door closer cover, arm, bracket
- Body aluminum, coated
- Non-handed
- adjustable closing speed for force 2-6 set
- even speed control under varying temperatures
- leak-proof construction
- adjustable latch action for force 2-6 set
- adjustable angle of opening between 70-180 degrees
- Finish: Satin or Mirror polished stainless steel cover, arm, bracket

#35.2390 Door closer set with stainless steel cover, arm, bracket

Set: door closer body TS83, cover, arm, brackets and screws.
Power size: EN 2/6 Force adjustable, non-handed
Fully intelligent back-check providing a cushioning effect to prevent uncontrolled opening between 70 and 110 degrees.
Latch action fully adjustable;

#35.083H FIRE rated door closer set with steel arm and bracket

Set: door closer body TS83, arm, brackets and screws.
Power size: EN 7 NOT adjustable, non handed
No other functions on the Fire Rated Door Closer;
silver paint steel parts



Fire rated door closer 35.083H depicted

#35.2390B Door closer body only

Door closer body TS83 force 2-6 fully adjustable. aluminum

#35.283A Cover only fitting TS83 body

316 stainless steel. Available in satin or polished stainless steel.

#35.283C Adjustable arm fitting TS 83 body

316 stainless steel. Available in satin or polished stainless steel.

#35.273 Parallel bracket with nylon bearings and screw on cap

316 stainless steel. Available in satin or polished stainless steel.
To fit arm #35.283C

#35.271 Standard bracket fitting TS 83 body

316 stainless steel. Available in satin or polished stainless steel.



SPECIFICATIONS TS 83 SERIES DOOR CLOSER BODIES

Easy to fix and even easier to adjust. The door closer for almost every door size and application.

Decades of experience have gone into the development of the TS 83. The result is user comfort coupled with outstanding versatility. It can be adjusted to suit almost all types of door.

Plus points

For the trade

- Low inventory costs and reduced stocking requirement thanks to streamlined product range.
- Practical and effective solutions to meet special applications thanks to comprehensive choice of accessories.

For the installer

- Easy to fix.
- Can be “tailored” to the requirements of the door by simple adjustment.
- Just one model for RH (DIN-R, ISO 5) and LH (DIN-L, ISO 6) doors, and for standard and frame/lintel fixing.
- Spring strength range EN 3–6 to suit virtually every application.

It can even be supplied with additional anti-corrosion protection for exposed applications or aggressive conditions.

Fixing couldn't be easier – and last but not least – it's engineered for excellence.

Certified to ISO 9001.

For the specifier/architect

- Compact closer design and sturdy flat-form arm assembly.
- Wide range of standard functions supplemented by optional extras.
- Suitable for fire doors.

For the user

- Optimum wall and door protection thanks to “thinking” backcheck.
- Closing speed virtually unaffected by temperature fluctuations.
- Proportionately low opening resistance thanks to high mechanical efficiency.

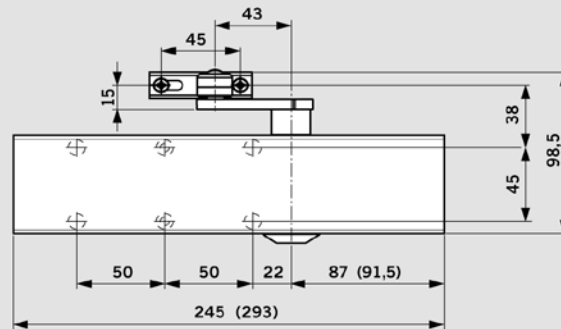
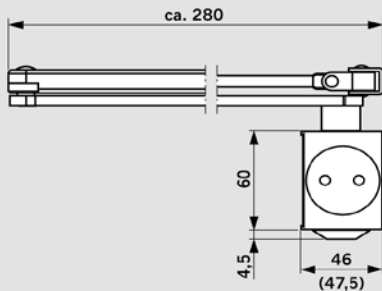
Data and features		TS 83	
		EN 3-6	EN 7
Closing force adjustable	Size		
Standard doors ¹⁾	≤ 1400 mm	●	–
	≤ 1600 mm	–	●
External doors, outward opening ¹⁾	≤ 1400 mm	●	–
	≤ 1600 mm	–	●
For fire and smoke check doors ¹⁾	≤ 1400 mm	●	–
	≤ 1600 mm	–	●
Non-handed		●	●
Arm assembly type	Standard	●	●
	Flatform	●	●
	Slide channel	–	–
Closing force variable by means of adjustment screw		●	–
Closing speed adjustable at 2 separate valves	180° – 15°	●	–
	15° – 0°	●	–
Closing speed variable by means of valve adjustment		–	●
Adjustable latching action	by arm	●	●
Backcheck	self-regulating	●	●
	adjustable at valve	●	●
Delayed action variable at valve		○	–
Hold-open		○	○
Weight in kg		1.7	3.3
Dimensions in mm	Length	245	293
	Overall depth	46	47.5
	Height	60	60
Door closer tested to EN 1154		●	●
CE mark for construction products		●	●

● yes – no ○ optional

¹⁾ For applications involving particularly heavy or wide doors, and doors which have to close against wind resistance, the next highest closer size or a higher spring strength should be applied.



The TS 83 conforms to most recognised international standards and complies with the requirements and/or recommendations of the following:
CERTIFIRE approved for fire doors



() = EN 7

SET: #35.2390 Body TS 83 with 5 functions and force 2-5 adjustable; 316 polished stainless steel cover, adjustable arm and parallel bracket.



SPECIFICATIONS TS 83 SERIES STANDARD STEEL DOOR ASSECORIES FOR INTERIOR USE NOT SUITABLE FOR MARINE ENVIRONMENT USE

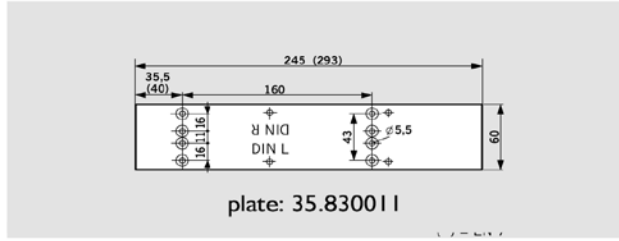
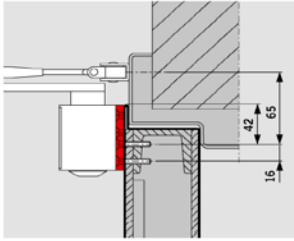


plate: 35.830011

Mounting backplate TS 83
For use with fire and smoke check doors and also as an intermediate plate when direct fixing to the door is not possible; with fixing hole pattern to EN 1154, supplement 1.

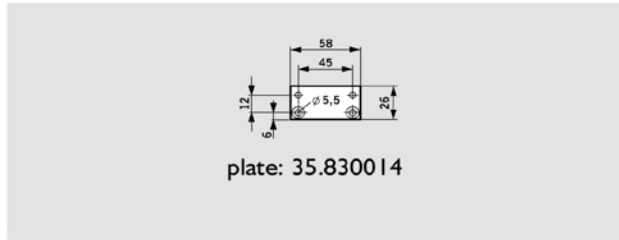
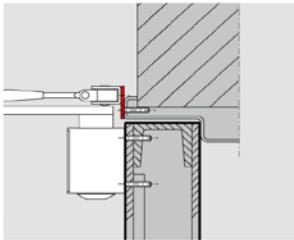
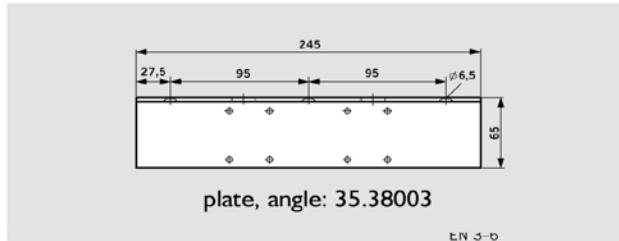
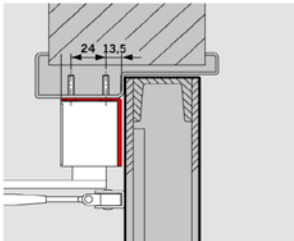


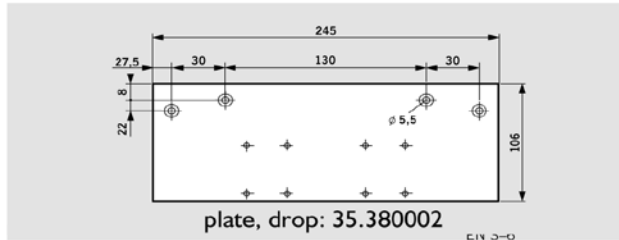
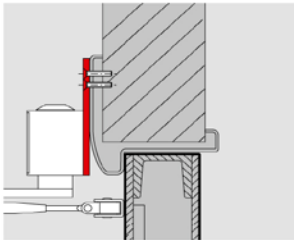
plate: 35.830014

Hinge plate TS 73 V/TS 83
For fixing the arm bracket to particularly narrow door frames.



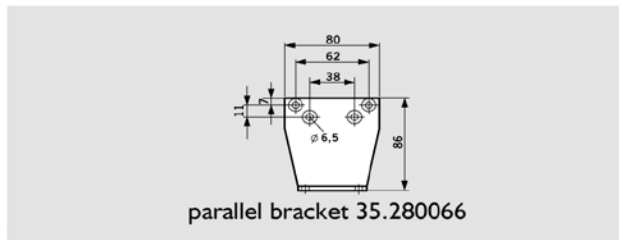
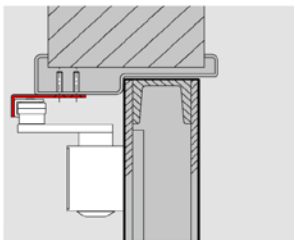
plate, angle: 35.38003

Angle bracket TS 83
For frame/lintel fixing of the closer on the push side of doors with deep reveals.
On fire and smoke check doors, proof of suitability required in relation to the individual door concerned.



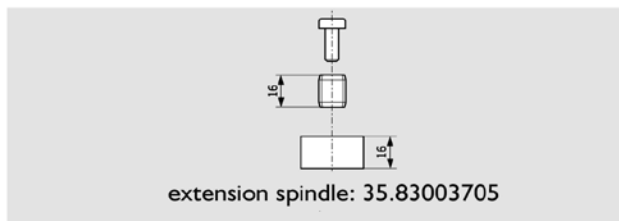
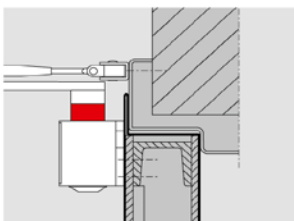
plate, drop: 35.380002

Drop plate TS 73 V/TS 83
For installation on frame when direct fixing of closer is not possible.
On fire and smoke check doors, proof of suitability required in relation to the individual door concerned.



parallel bracket 35.280066

Parallel arm bracket TS 73 V/TS 83
For parallel arm installation on the push side (see fixing instructions for dimensions).
On fire and smoke check doors, proof of suitability required in relation to the individual door concerned.



extension spindle: 35.83003705

Spindle extension TS 73 V/TS 83
For increasing the distance between the closer and the arm assembly in the case of doors with a high overlap; 16 mm high.

Closer body TS 83



6 DORMA

Standard arm



Platform arm



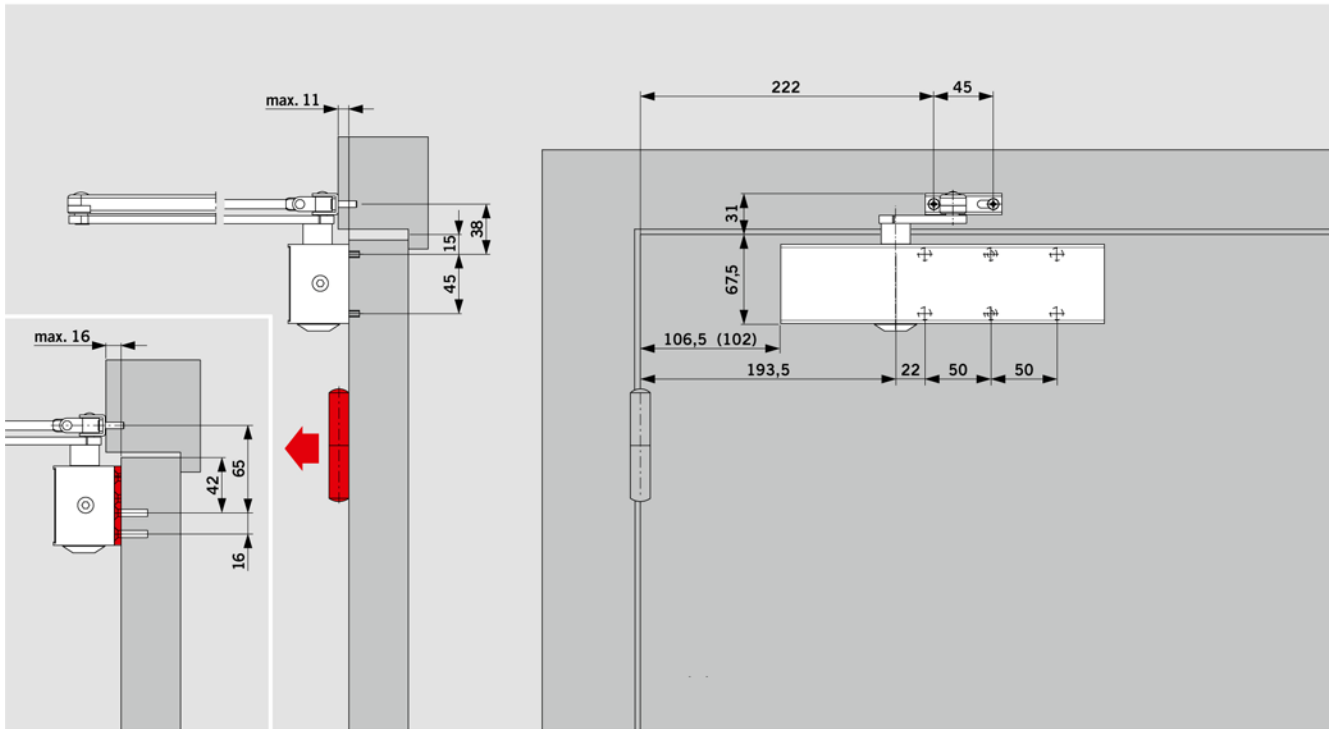
#35.2390C: body force 7 fire rated
#35.2390B: body force 2-6 adjustable; not fire rated.

#35.220023 arm fire rated

#35.283C arm, stainless steel adjustable

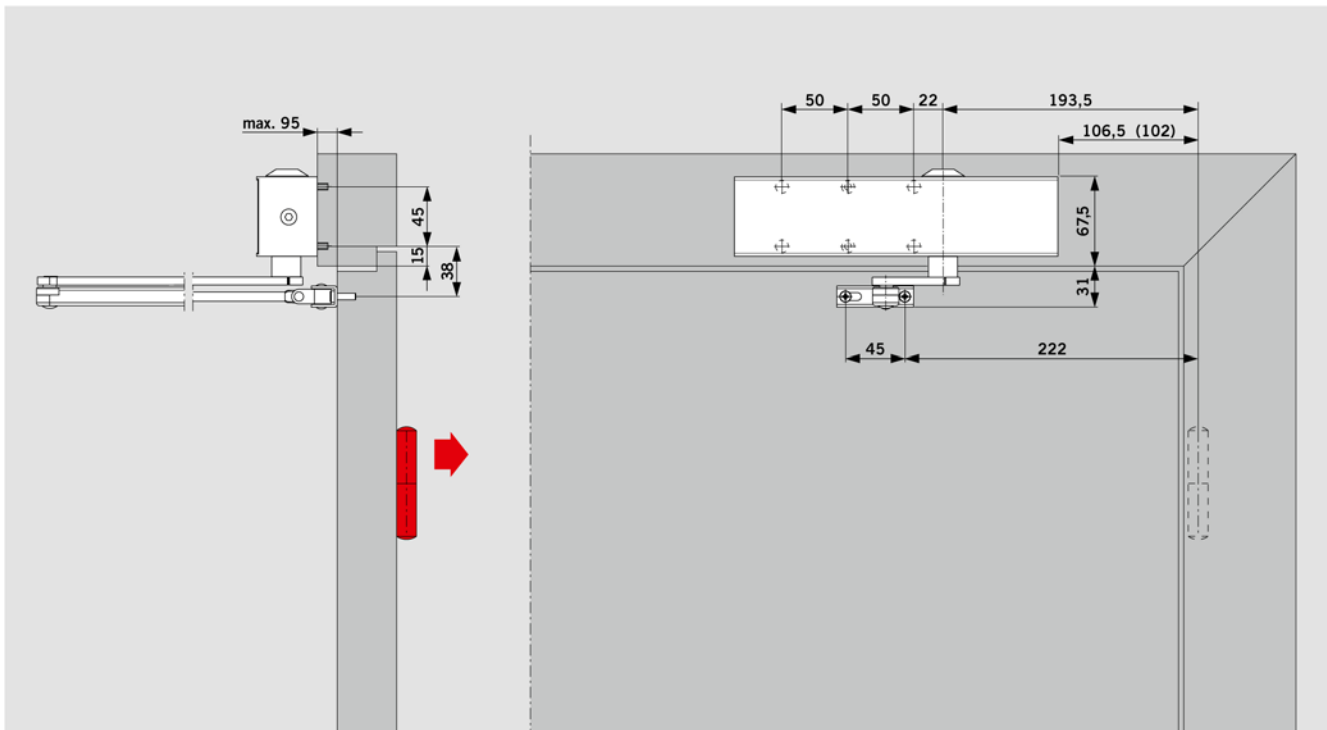


INSTALLATION DIAGRAM FOR THE TS 83 BODY - FORCE 2-6 WITH PARALLEL BRACKET DOOR LEAF FIXING, PULL SIDE



Example shows LH (ISO 6) door; RH (ISO 5) doors mirrored arrangement

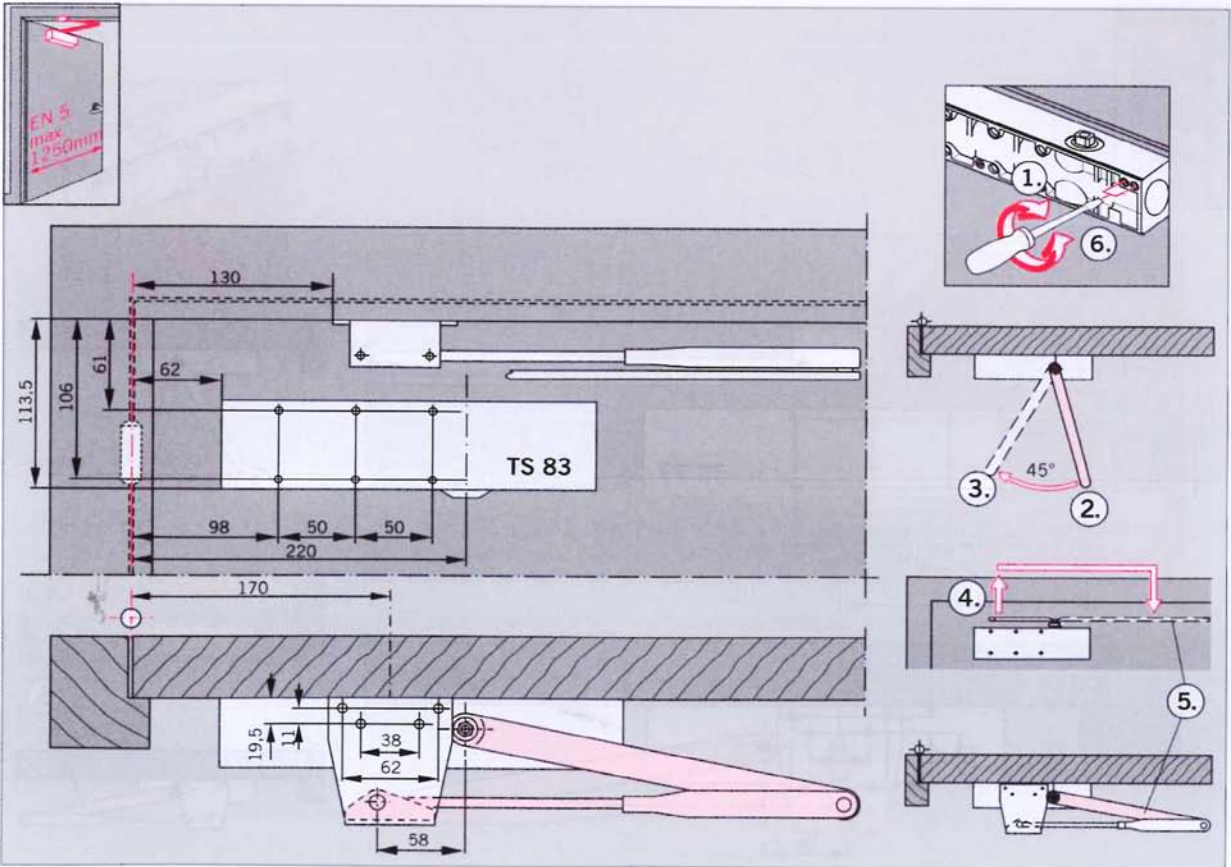
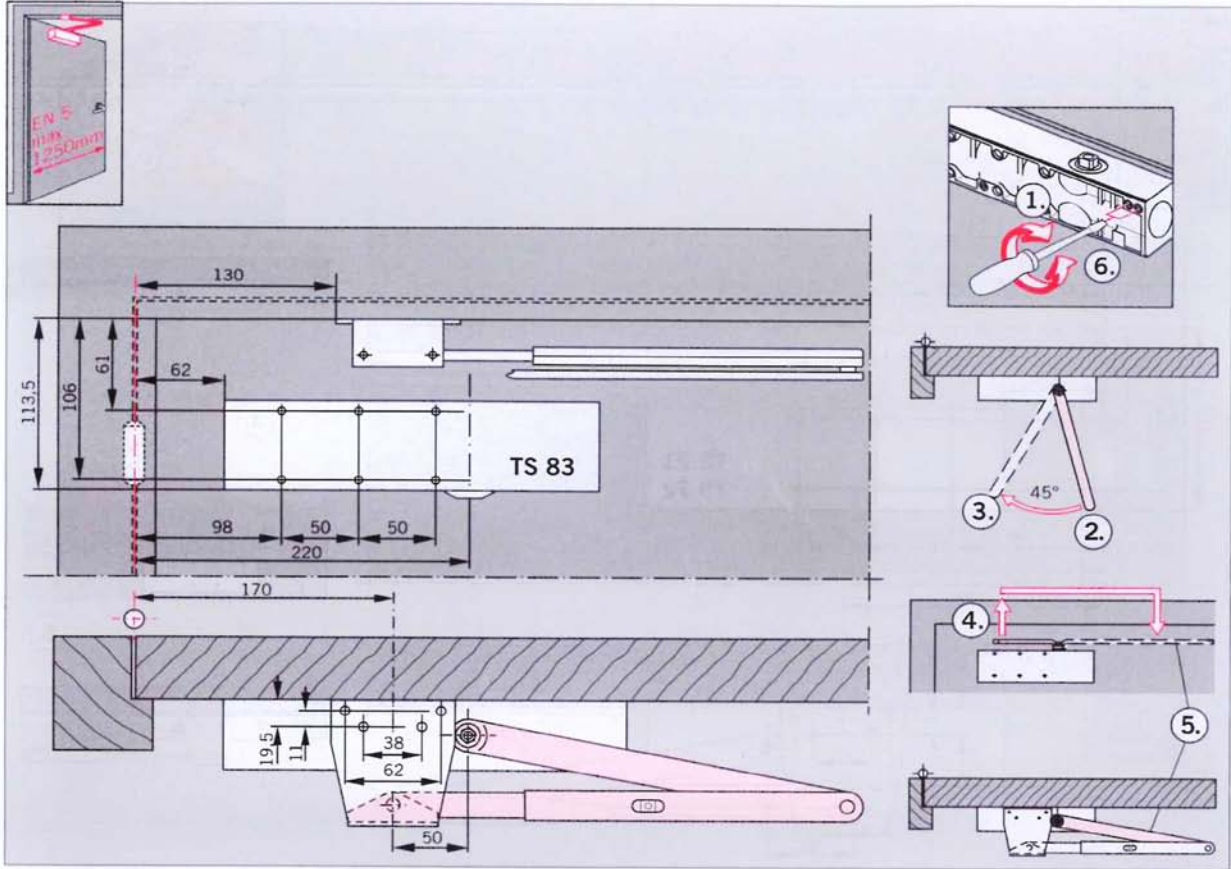
TRANSOM FIXING, PUSH SIDE



Example shows LH (ISO 6) door; RH (ISO 5) doors mirrored arrangement



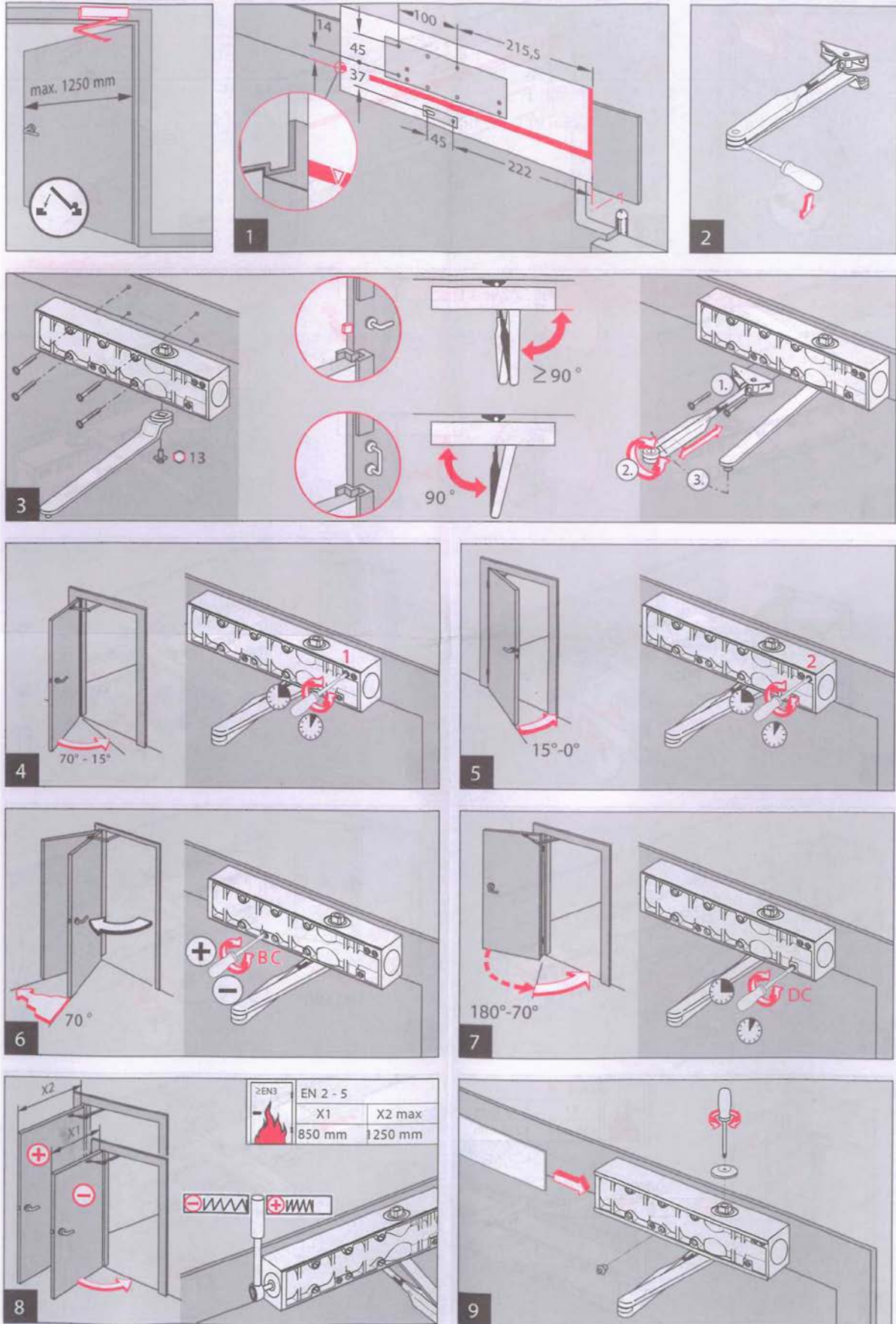
INSTALLATION DIAGRAM FOR THE TS 83 BODY - FORCE 2-6 WITH PARALLEL BRACKET



Änderungen vorbehalten
Subject to change without notice

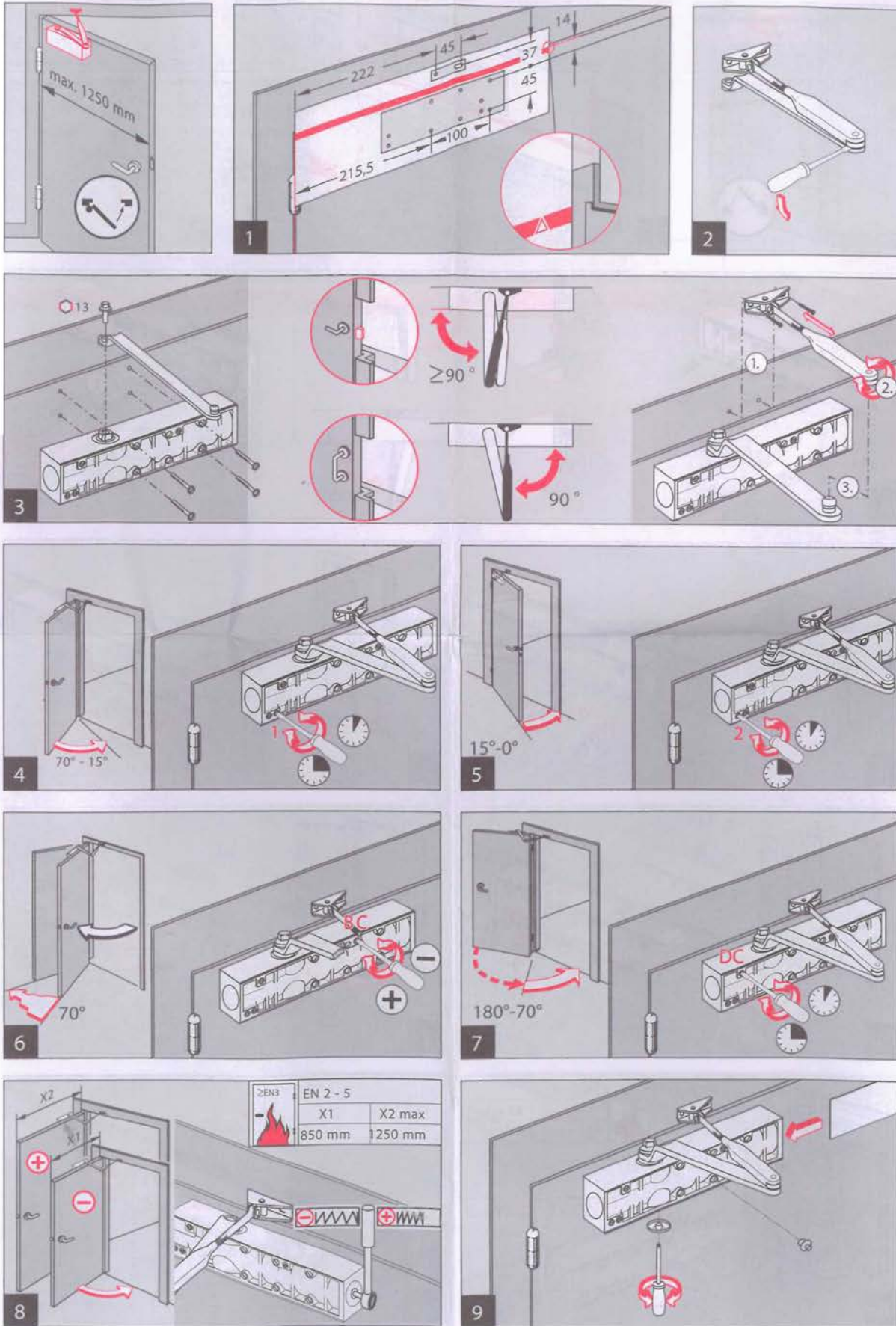


INSTALLATION DIAGRAM FOR THE TS 83 BODY FORCE 2-6



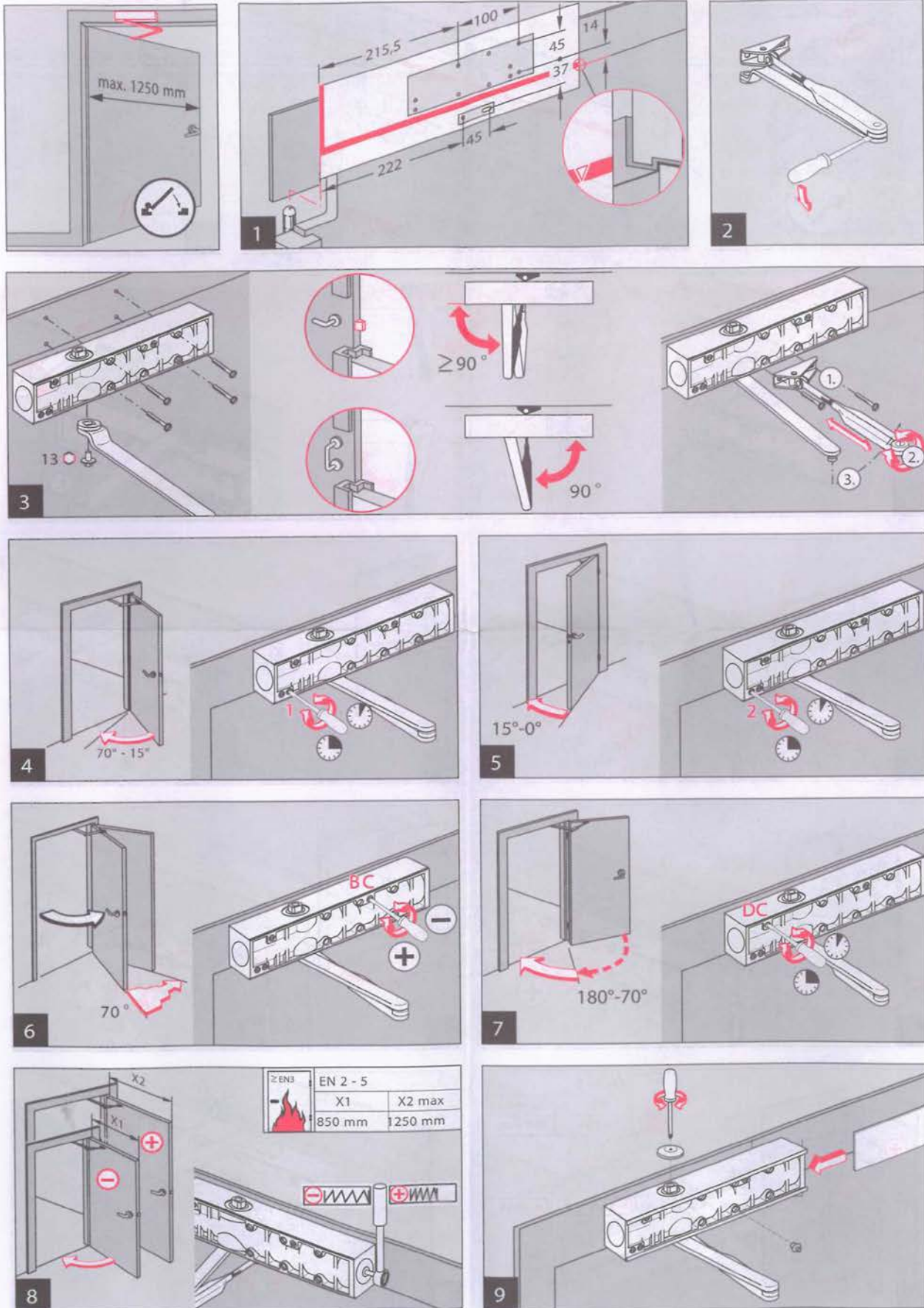


INSTALLATION DIAGRAM FOR THE TS 83 BODY FORCE 2-6





INSTALLATION DIAGRAM FOR THE TS 83 BODY FORCE 2-6





INSTALLATION DIAGRAM FOR THE TS 83 BODY FORCE 2-6

